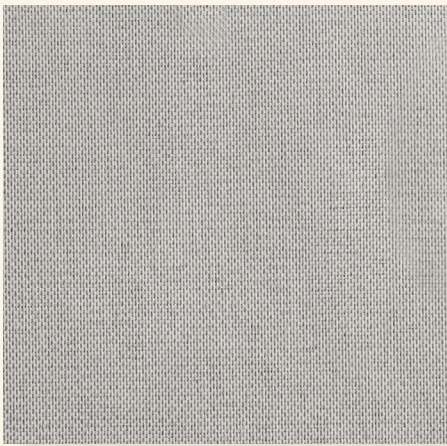
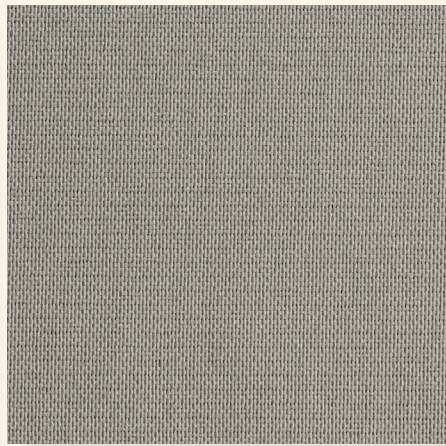


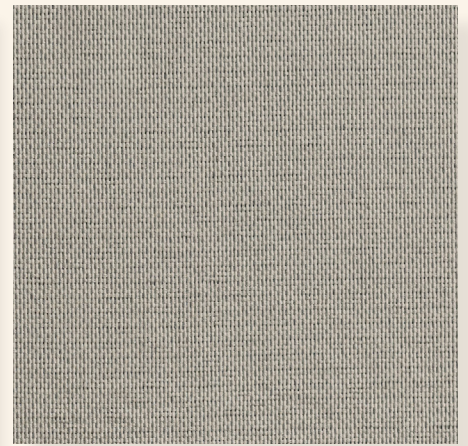
PLAIN BLACKOUT
CATALOG



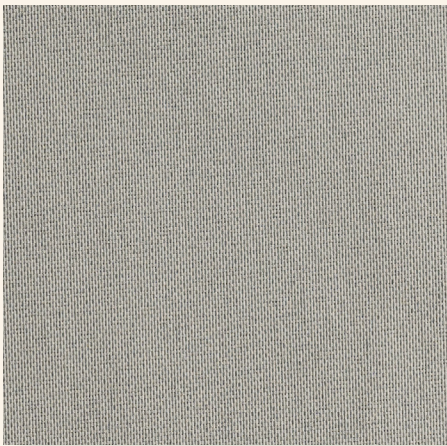
Light Gray



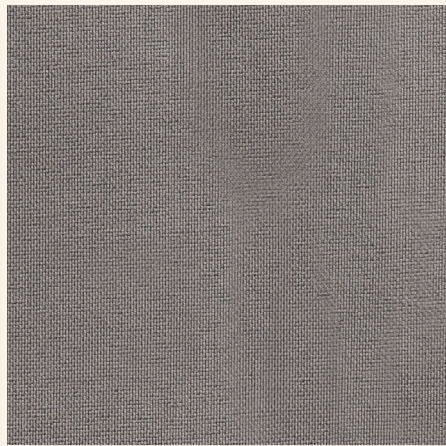
Medium Gray



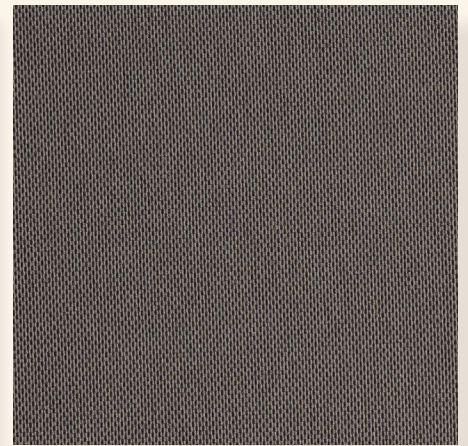
Off-White



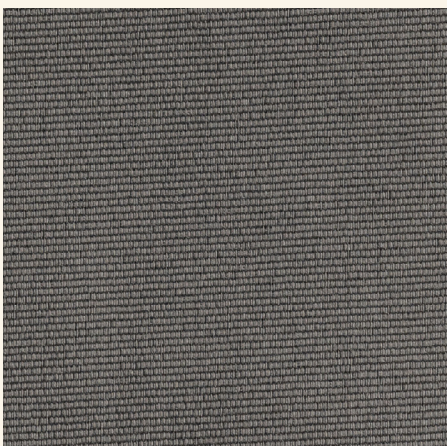
Light Taupe



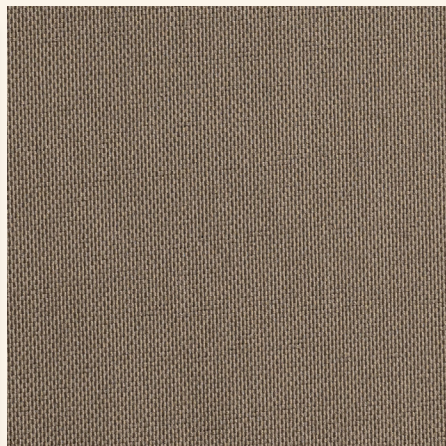
Medium Taupe



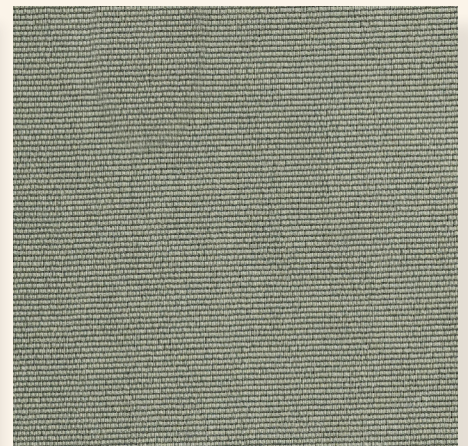
Dark Brown



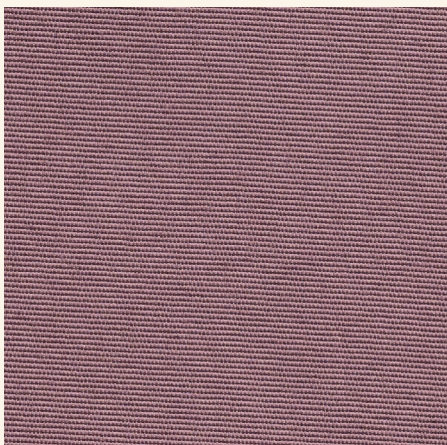
Charcoal Gray



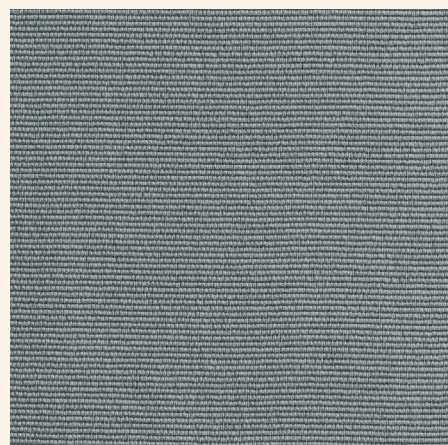
Warm Brown



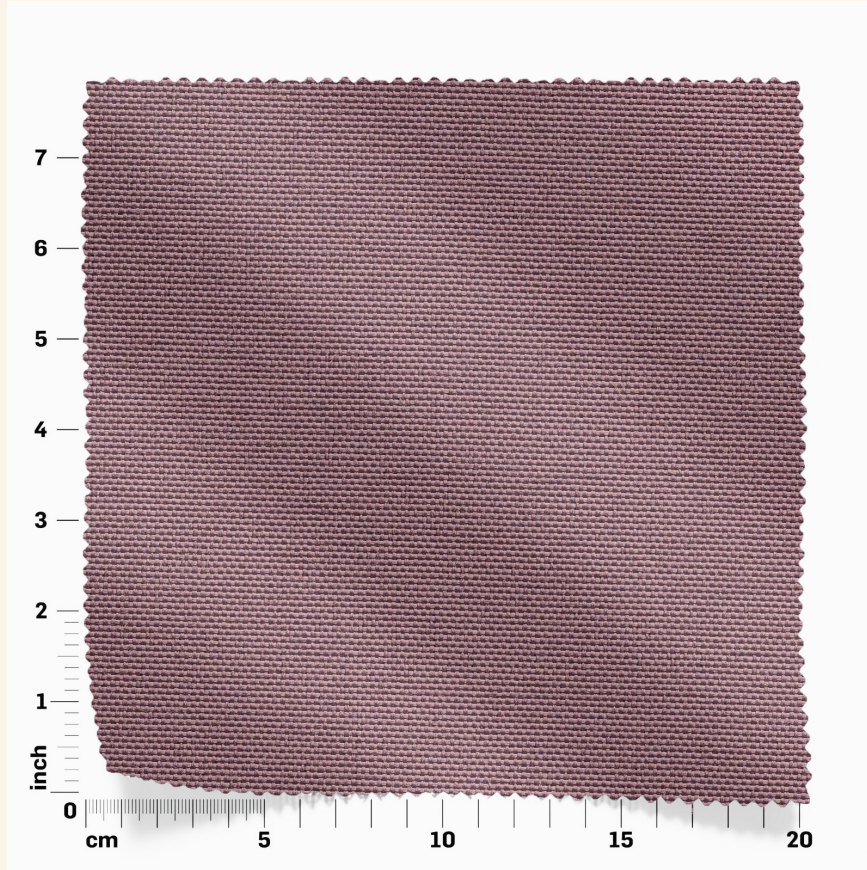
Olive



Dusty Rose



Slate Blue




Description:

The **Plain** blackout fabric is a robust textile designed for applications requiring effective light blocking, safety, and durability. This fabric is made of 100% polyester with an acrylic back coating, providing a substantial weight of 250 gsm (+/- 5%). It meets rigorous fire retardant standards, including B1 (German standard), BS5867 Part 2B (British standard), IMO FTP Code 2010 Part 7 (Marine standard), EN13773 (European standard), and NFPA 701 1+2 (U.S. standard), making it suitable for both residential and commercial use. The fabric is also equipped with a waterproof face layer, adding an extra level of protection and longevity against moisture. Its sophisticated texture and reliable performance make it ideal for curtains, blinds, and other window treatments, delivering a balance of style, privacy, and safety.



Drapes
 Plain



Product Name :	Blackout Plain
Width:	280 cm
Weight:	250 gsm+/-5%
Colour:	16 colours
Composition:	100% Polyester / Acrylic back coating
Make Up:	Full width on tube
Ave Piece Length:	50m
FR Standards:	B1, BS5867 Part 2B, IMO FTP Code 2010 Part 7, EN13773, NFPA 701 1+2
Dimensional Stability to Washing:	+/-3%
Dimensional Stability to Cleaning:	+/-3%
Care Instructions:	 iron on non-coated side only when storing, pressure marks may occur. Too much weight on the pallet holding the fabric or over hang when the fabric is on the roll may cause indentations or bruising. See New Jacquardtex Quality Standard for further information, please contact us.
Product usage:	